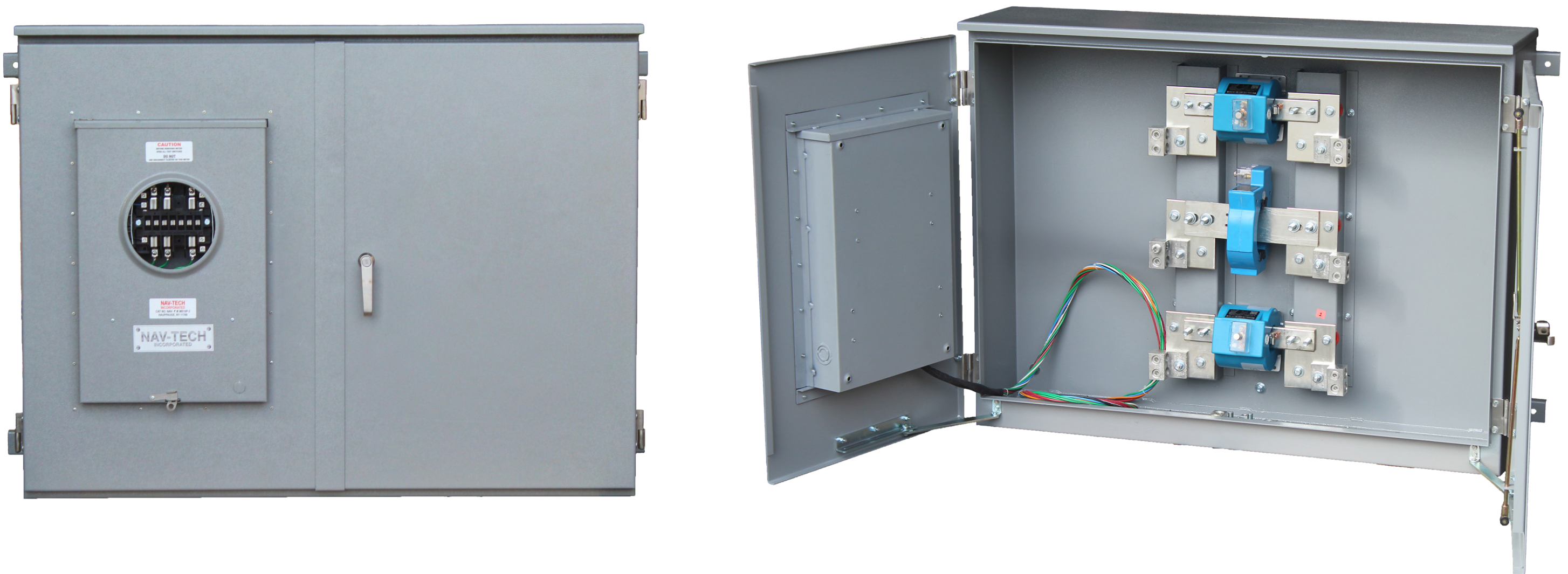


*First Energy territories include: Jersey Central Power & Light, The Illuminating Company, Toledo Edison, Met-ed, Penelec, Penn Power, West Penn Power, Ohio Edison, Mon Power, Potomac Edison.



Description

- Trans sockets combine the meter socket and transformer cabinet to provide more cost-effective metering. Trans sockets' single enclosure for current-transformer metering allows mounting of current transformers and test switches. Suitable for overhead or underground service.



Features

- Trans socket unit supplied with furnished meter pan and CT wiring upon utility approval.
- Security hardware to be provided for CT cabinet door and meter enclosure cover (to be installed by contractor).
- Cold sequence service requires a disconnect switch before the CT cabinet.
- Bus bar shall be silver or tin plated and shall be sized per the NEC.
- Cabinet shall be rated NEMA 3R and shall be constructed from code gauge galvanized or galvanized steel.
- Available in 1 and 3 phase configurations complete with prewired test switch.
- SCCR: These units have a 50K short circuit current withstand rating.
- Bus bar shall be mounted in the cabinet by means of standoff insulators or insulated mounting brackets. Insulating material shall conform to the applicable sections of UL 746 and UL 94.
- For use with both first energy bar or window style CT's.

Part Number	Wiring	Amperage (A)	Voltage (V)	Line/Load	Phase (Ø)	Enclosure Type	H x W x D (Inches)
NAV-FE-TS800-1H	Prewired	200-800	600	(2) 600 MCM -#4	1	Outdoor	36" x 47" x 12"
NAV-FE-TS800-3H	Prewired	200-800	600	(2) 600 MCM -#4	3	Outdoor	36" x 47" x 12"