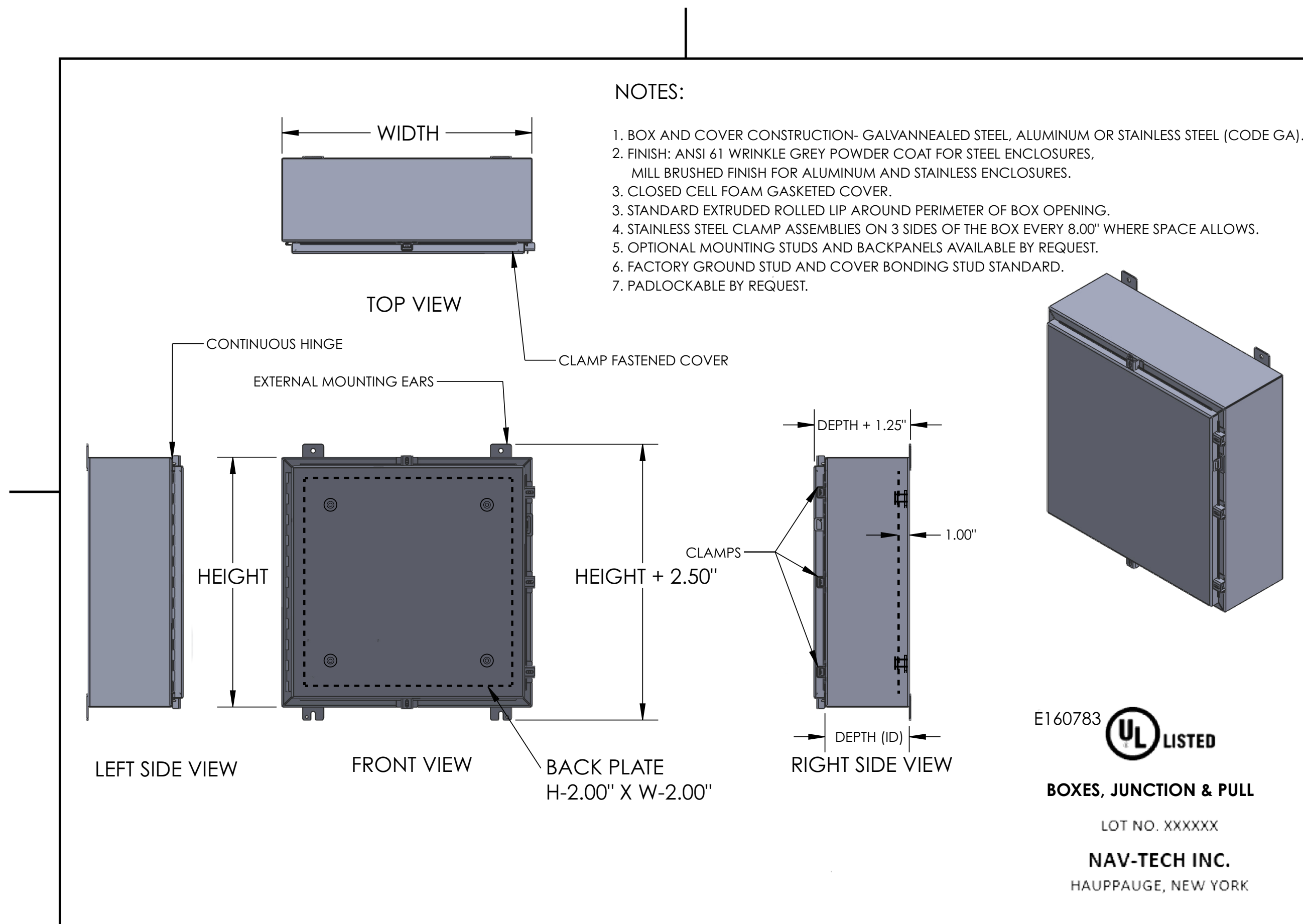


# Weatherproof Hinge Cover Box Type 4X Outdoor DSE Style With Back Plate



**\*Stainless steel or aluminum available upon request**

**\*Additional sizes available upon request**

**\*Part number: wphcbx(HHWWDD)-ss(304 or 316); Use height, width, depth for (HHWWDD). Use suffix-BP for enclosures with back plate**

## Features

- Enclosure and cover are manufactured from 16, 14, or 12 gauge stainless steel in accordance with UL standards.
- Stainless steel external screw clamps on three sides.
- Stainless steel continuous hinge.
- All seams continuously welded and ground smooth.
- Rolled lip around three sides of door and all sides of door opening for watertight seal.
- Mill brushed finish is standard.
- Neoprene gasket attached to door with oil resistant adhesive.
- Clamps on three sides of door for watertight seal.
- Stainless steel external hardware.
- Hasp and staple provided for padlocking.
- External mounting feet.
- Collar studs for mounting optional panel available upon request.

## Application

- Designed to protect wiring in outdoor installations against rain, sleet, or snow, or indoors against dripping water.
- Degree of protection against corrosion.
- Protection against hose directed water.

- NEMA Type 4X
- UL 50
- 50E Listed

